

ROSSMOOR LAKES

SITUATE IN SECTION 27, TOWNSHIP 45 SOUTH, RANGE 42 EAST, PALM BEACH COUNTY, FLORIDA

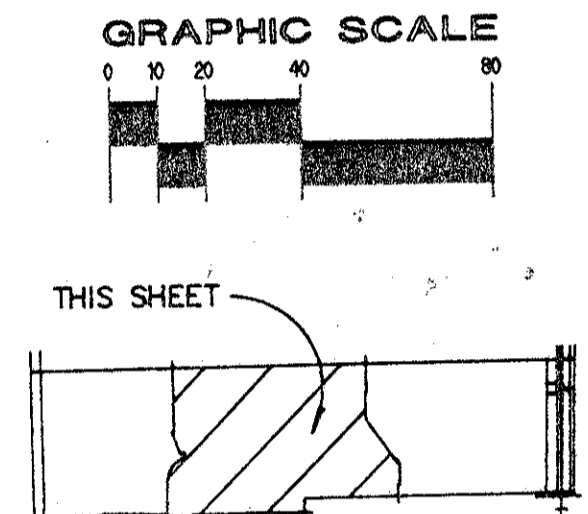
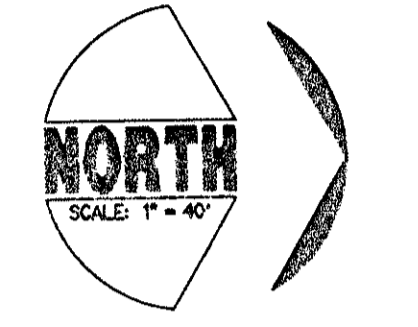
FEBRUARY 1994 COPPER LAKE COURT N00°12'02"W NOT PLATTED 2653.51' DIAMOND LAKE COURT WEST LINE, EAST 1/2, N.E. 1/4 OF SECTION 27 TRACT K (LANDSCAPE TRACT) SHEET 3 OF 6

- LEGEND**
- UE UTILITY EASEMENT
 - OH&ME OVERHANG & MAINTENANCE EASEMENT
 - CMF CANAL MAINTENANCE EASEMENT
 - LSBE LANDSCAPE BUFFER EASEMENT
 - LMW LAKE MAINTENANCE EASEMENT
 - DE DRAINAGE EASEMENT
 - LSE LIFT STATION EASEMENT
 - LWD LAKE WORTH DRAINAGE DISTRICT
 - RD RADIAL
 - NR NON-RADIAL
 - RA RADIUS
 - DELTA DELTA
 - ARC ARC
 - CHORD CHORD
 - SPC SET PERMANENT CONTROL POINT
 - CPM CONCRETE PERMANENT REFERENCE MONUMENT
 - PT POINT OF TANGENCY (NOT SET)
 - PC POINT OF CURVATURE
 - AC ACRES

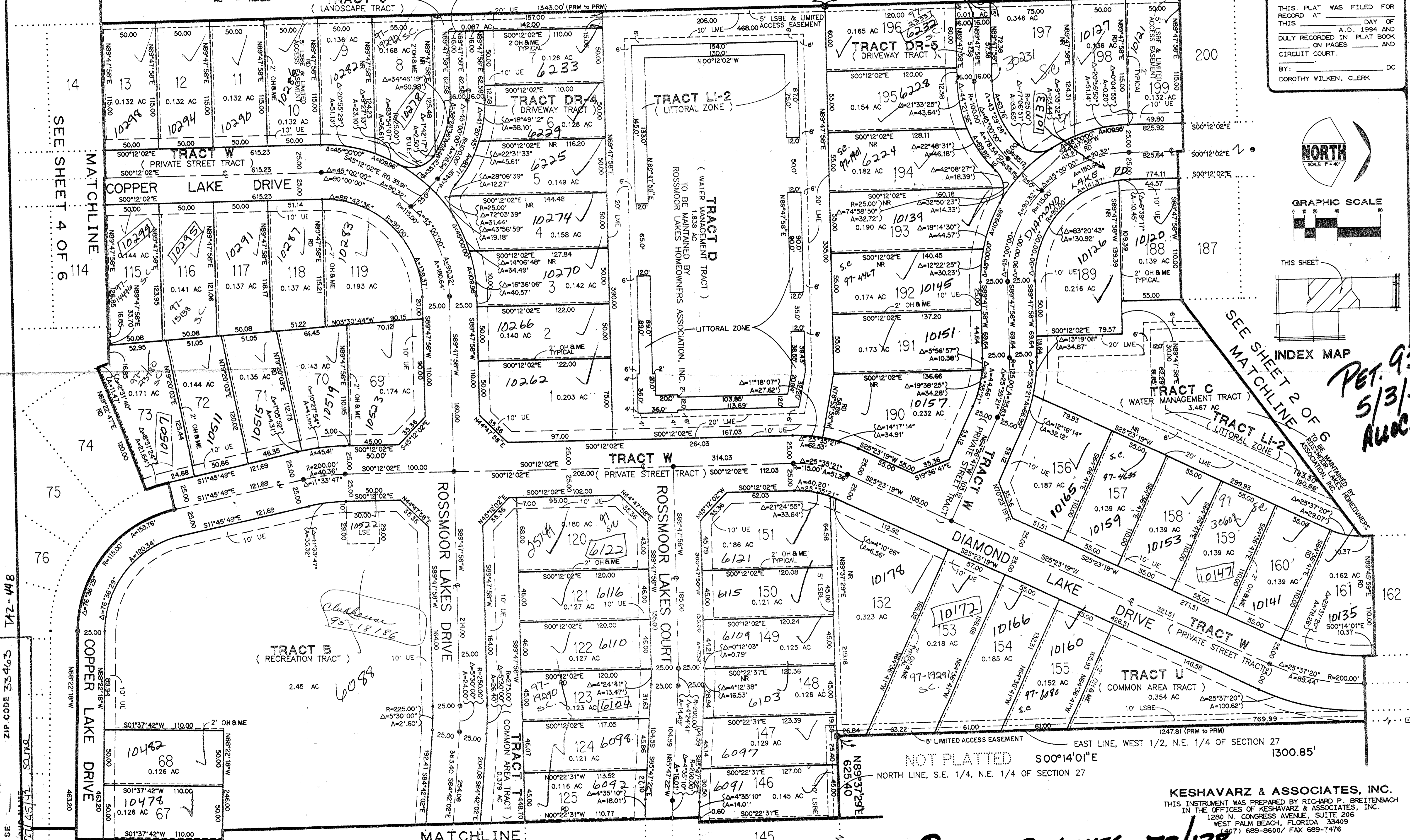
STATE OF FLORIDA
COUNTY OF PALM BEACH } SS

THIS PLAT WAS FILED FOR RECORD AT _____ DAY OF THIS _____ A.D. 1994 AND DULY RECORDED IN PLAT BOOK _____ ON PAGES _____ AND _____ CIRCUIT COURT.

BY: _____ DC
DOROTHY WILKEN, CLERK



*PET. 93-34
5/3/3/K
ALOC #0001
7/2/95*



SEE SHEET 4 OF 6

SEE SHEET 5 OF 6

SEE SHEET 6 OF 6

ROSSMOOR LAKES 73/138
0626-001

KESHAVARZ & ASSOCIATES, INC.
THIS INSTRUMENT WAS PREPARED BY RICHARD P. BREITENBACH IN THE OFFICES OF KESHAVARZ & ASSOCIATES, INC. 1280 N. CONGRESS AVENUE, SUITE 206 WEST PALM BEACH, FLORIDA 33409 (407) 689-8600 / FAX 689-7476

SUBDIVISION: ROSSMOOR LAKES
BOOK: 138
FLOOD ZONE: B/AH-20 FLOOD MAP # 185A
QUAD: 35
ZIP CODE: 33463

TAZ-448